

NEVER ENDING SYSTEM SURFACE
COLOR FINISH CHART

PROJECT

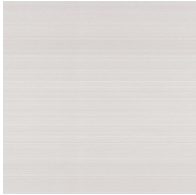
TYPE

NOTES

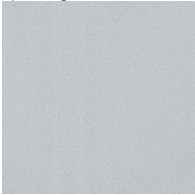
QUANTITY

DATE

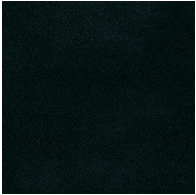
Aluminum Natural Anodized - 00



Sparkling Silver - 01



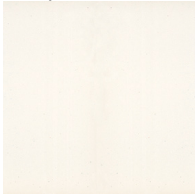
Black Velvet - 02



Crystal White - 03



Creamy - 04



Hampton Bay - 05



Ancient Bronze - 28



Urban Forest - 07



In the Army - 08



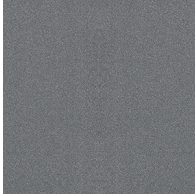
Rusty Angel - 09



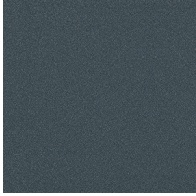
Ancient Bronze - 28



Fade to Gray - 12



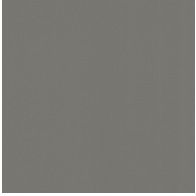
Mysterious Gray - 13



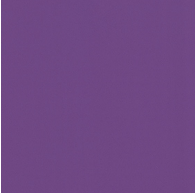
Ancient Bronze - 28



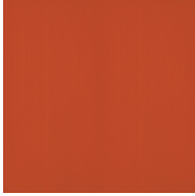
Lost Dream - 15



Purple Sky - 16



Fresh Oh - 17



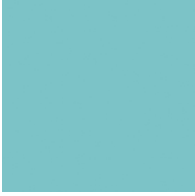
Funky P. - 18



Kissing Aphrodite - 19



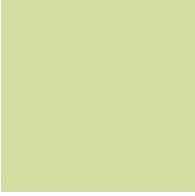
Poseidon's Paradise - 20



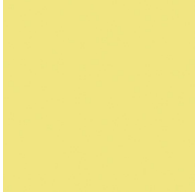
Blue Sky - 21



Spring Green - 22



Mellow Yellow - 23



Golden Heart - 24



Gun Metal - 25



Champagne Cream - 26



Copper Mine - 27



Ancient Bronze - 28



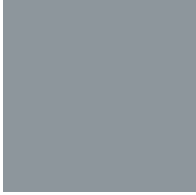
Jazz Gold - 29



Olive Breeze - 30



Moonlight Silver - 31



Rosewood Red - 32



Lagoon - 06



Rusty Rush - 10



Milk and Chocolate - 11



Twilight - 14



Digital: Not all screens are calibrated the same, and therefore, colors will appear differently between screens.
Physical: When texture is involved, there will be variations in color, character and tone within a product line and between product families.
Gun Metal: No Gun Metal finish is alike. It combines a mixture of transparent and black color particles which ensures a highly individual effect and no luminaire being identical. These finishes have slight fading from specific powder coating production. Each luminaire will slightly vary.
Zaneen GmbH, Tel: +49 30 308 398 398, Fax: +49 30 308 398 399, www.zaneen.com
Available for International specifications by adding 'INT' at the end of the existing Model #. For assistance on 'custom' specifications, contact zteam@zaneen.com.
In a constant effort to supply the best product, we reserve the right to change specifications or materials without notice. The most recent specification sheets are found at zaneen.com